



Mail | Sign out



My Account

Submit Release

Statistics

Consoles Support

Press Release Preview

(Minimize)

Please note: this **PREVIEW ONLY** version of your release (see below) is made available to show you how your distributed release will look. Some important functionality (including tracking technology) is not available in the preview version of your release. It is only available from within your management console and should not be shared with third parties.

When you are done, please select one of these actions:



2007-12-31

Home | Learn More | Release Features | Success Stories | Search Archives | PRWeb Direct | Submit Release

Industry Categories | News by Country | News by MSA | Today's News | Browse by Day | PR Trackbacks™ | ViewNews™ | eBook Digests | RSS

All Press Releases for January 2, 2008



Subscribe to this News Feed



Subscribe to this Podcast Feed



Pro-Link GLOBAL Visa & Immigration Services Adds Key Senior Consultant To Their U.S. Global Immigration Team Making Global Immigration More Accessible For Law Firms And Corporations

OPTIONS

- Printer Friendly Version
- Download PDF Version
- Download Reader Version
- BlogThis
- ShareIt

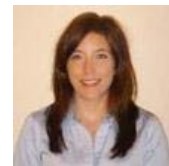
Kate Boyd, an experienced global immigration consultant, graduate of the University of Kansas and accredited Paralegal recently joined Pro-Link GLOBAL, the "one-stop" global visa and immigration practice for U.S. Immigration attorneys and Global Corporations.

CONTACT INFORMATION

Andrea Elliott
 Pro-Link GLOBAL Visa & Immigration Services
[Visit Our Site](#)
 +1(941)794-6461
[Email us Here](#)

Michele Longley
 Pro-Link GLOBAL Group, Limited Liability Corporation
[Visit Our Site](#)
 +1(941)761-1495
[Email us Here](#)

ATTACHED FILES



Kate Boyd



Pro-Link GLOBAL Logo

Bradenton, FL (PRWEB) January 2, 2008

PRO-LINK GLOBAL Visa and Immigration Services continues to grow and is pleased to introduce the latest member of its team, Kate Boyd as a Senior Global Immigration Consultant based in the Colorado office. Her experience with global immigration on large corporate accounts with various reputed US immigration law firms will be invaluable to Pro-link. Kate, who has a BA degree in English from the University of Kansas and a paralegal certificate from the Phoenix Paralegal College, has worked abroad in New Zealand and has managed large corporate global immigration accounts extremely successfully.

Kate will manage key corporate accounts with their global work permit and business visa needs. Andrea Elliott, the Senior Counsel (Foreign) at Pro-Link GLOBAL, said that "We are delighted to be bringing someone of Kate's caliber to Pro-link GLOBAL. Having worked with Kate before I know that she will undoubtedly prove to be a great asset as part of Pro-link's continuing dynamic expansion."

“ We are delighted to be bringing someone of Kate's caliber to Pro-link GLOBAL. Having worked with Kate before I know that she will undoubtedly prove to be a great asset as part of Pro-link's continuing dynamic expansion. ”

With the Pro-link GLOBAL Keiretsu Global Network Partners (KGNP) constantly growing and expanding internationally, the solid senior level global immigration experience that Kate brings will enhance the personalized concierge level of service that has made Pro-Link GLOBAL a world renowned global immigration practice. Said Michele Longley, the Business Development Manager at Pro-Link GLOBAL, "not for nothing our motto is that the impossible we do at once, miracles take a little longer."

About Pro-Link GLOBAL

Pro-Link GLOBAL, known as the leading corporate global immigration service provider, offers concierge quality immigration services to companies in most of the 194 countries in the world today. Pro-Link GLOBAL provides corporate global immigration services such as work permits, entry visas, residence permits, and obtaining legalizations for documents as well as providing on-site training for HR personnel in their global compliance requirements.

Pro-Link GLOBAL, headquartered in Florida, USA, has a physical presence in 49 of the key global destinations. In countries where Pro-Link GLOBAL does not have a physical presence, they work in integrated professional consulting teams with other outside legal specialists who are known as Keiretsu Global Network Partner or PLG iKGNP.

Pro-Link GLOBAL offer a free subscription to their bi-monthly e-bulletin called "Global BRIEF" which is filled with the latest breaking news in global immigration law.

For more information about PLG, the KGNP or corporate global immigration services, please contact Michele Longley, Business Development Manager at +1 941 761 1495 or visit the website www.pro-linkglobal.com

Post Comment:

Trackback URL: <http://console.prweb.com/pingpr.php/VGhpc1Mb3ZILVpldGETu2luZy1Mb3ZILVplcm8=>



global immigration visa business visa residence permit entry visa immigration law firm paralegal consulate keiretsu global business

Bookmark - [Del.icio.us](#) | [Digg](#) | [Furl.it](#) | [Spurl](#) | [RawSugar](#) | [Simpzy](#) | [Shadows](#) | [Blink.it](#) | [My Web](#)

Other Releases by this Member

- Pro-Link GLOBAL Visa and Immigration Services Expands Their Global Immigration Team 2007-07-30



[Michele Longley](#)

ABOUT PRESS RELEASES

If you have any questions regarding information in these press releases please contact the company listed in the press release. Please do not contact PRWeb. We will be unable to assist you with your inquiry. PRWeb disclaims any content contained in these releases. Our complete disclaimer appears [here](#).

Disclaimer: If you have any questions regarding information in these press releases please contact the company listed in the press release. Please do not contact PRWeb®. We will be unable to assist you with your inquiry. PRWeb® disclaims any content contained in these releases. Our complete disclaimer appears [here](#).

© Copyright 1997-2007, Vocus PRW Holdings, LLC.
 Vocus, PRWeb and Publicity Wire are trademarks or registered trademarks of [Vocus, Inc.](#) or Vocus PRW Holdings, LLC.

[Terms of Service](#) | [Privacy Policy](#) | [Copyright](#)